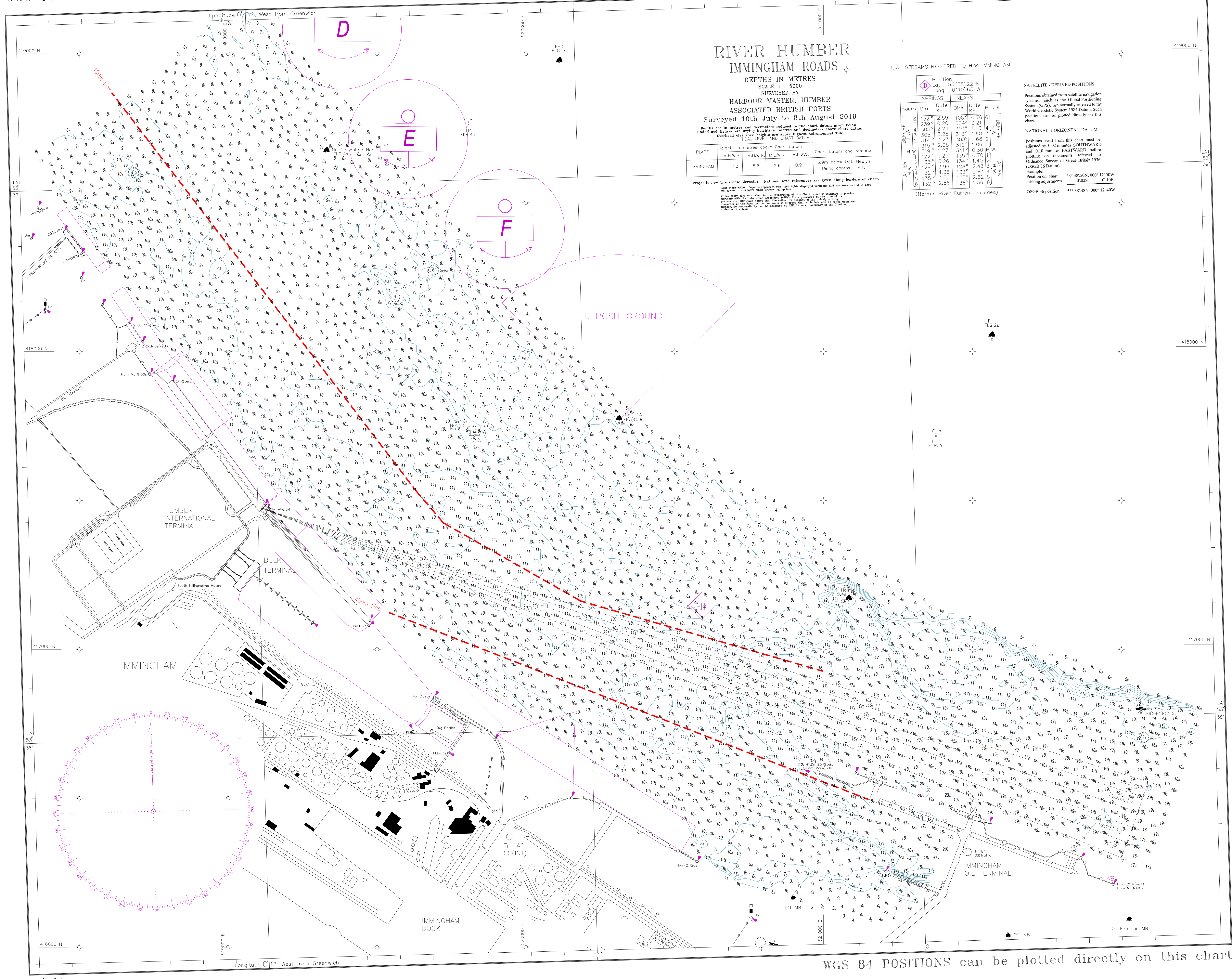


WGS 84 POSITIONS can be plotted directly on this chart

© Copyright 2019. All rights reserved. No part of this product may be reproduced in any form (including photocopying or by electronic means) without prior permission.



# RIVER HUMBER IMMINGHAM ROADS

DEPTHS IN METRES  
SCALE 1 : 5000  
SURVEYED BY  
HARBOUR MASTER, HUMBER  
ASSOCIATED BRITISH PORTS  
Surveyed 10th July to 8th August 2019  
Depths are in metres and decimetres reduced to the chart datum given below  
Underlined figures are drying heights in metres and decimetres above chart datum  
Overlaid clearance heights are above Highest Astronomical Tide  
TIDAL LEVEL AND CHART DATUM

PLACE	Heights in metres above Chart Datum				Chart Datum and remarks
	M.H.W.S.	M.H.W.N.	M.L.W.N.	M.L.W.S.	
IMMINGHAM	7.3	5.8	2.6	0.9	3.9m below O.D. Newlyn Being approx. L.A.T.

Projection -- Transverse Mercator. National Grid references are given along borders of chart.  
Light stars without legends represent day marks displayed vertically and are seen as red to port and green to starboard when proceeding upriver.  
White stars are taken in the preparation of this Chart, which is intended to provide navigators with the most accurate information. No guarantee is made of the quality of the information. All data are taken from the most recent available information and are subject to change. The user of this chart should be aware that the information is not intended for use in the design of any system and that the user should accept responsibility for any consequences in the use of the information.

TIDAL STREAMS REFERRED TO H.W. IMMINGHAM

Hours	SPRINGS		NEAPS		Hours
	Dirn	Rate Kn	Dirn	Rate Kn	
6	132°	2.59	106°	0.76	6
3	239°	0.20	004°	0.21	3
3	303°	2.24	310°	1.13	3
3	305°	3.25	313°	1.68	3
1	314°	3.23	308°	1.68	1
2	315°	2.95	319°	1.06	2
1	319°	1.27	341°	0.30	1
1	122°	1.25	135°	0.70	1
2	133°	3.26	134°	1.40	2
3	129°	3.96	128°	2.43	3
4	132°	4.36	132°	2.83	4
5	135°	3.50	135°	2.62	5
6	132°	2.86	136°	1.56	6

(Normal River Current Included)

**SATELLITE-DERIVED POSITIONS**  
Positions obtained from satellite navigation systems, such as the Global Positioning System (GPS), are normally referred to the World Geodetic System 1984 Datum. Such positions can be plotted directly on this chart.

**NATIONAL HORIZONTAL DATUM**  
Positions read from this chart must be adjusted by 0.02 minutes SOUTHWARD and 0.10 minutes EASTWARD before plotting on documents referred to Ordnance Survey of Great Britain 1936 (OSGB 36 Datum).  
Example:  
Position on chart 53° 38' 48.00" 12° 50' 07.02"  
OSGB 36 position 53° 38' 48.00" 12° 40' 07.02"

WGS 84 POSITIONS can be plotted directly on this chart